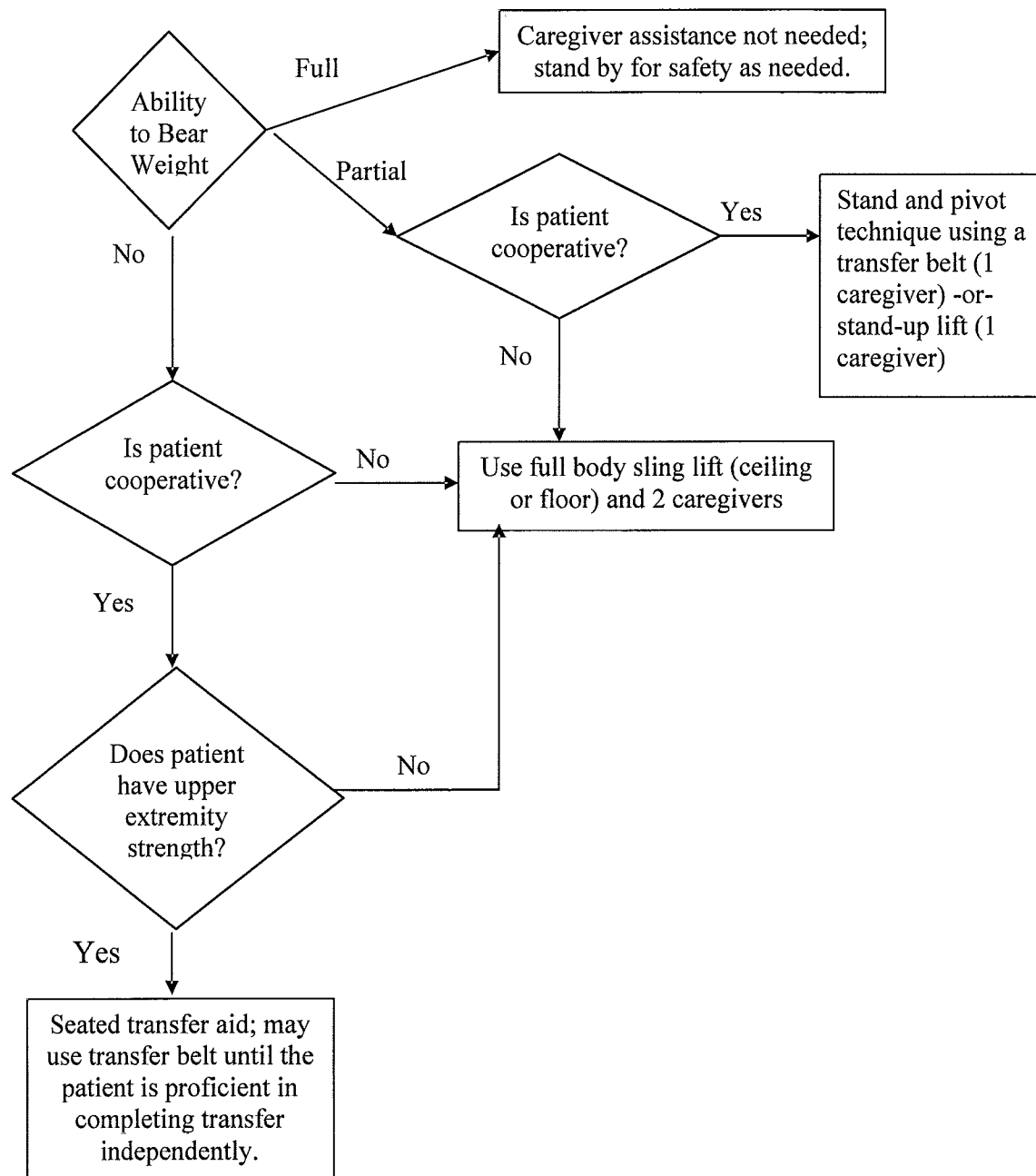


## Safe Patient Handling Algorithms

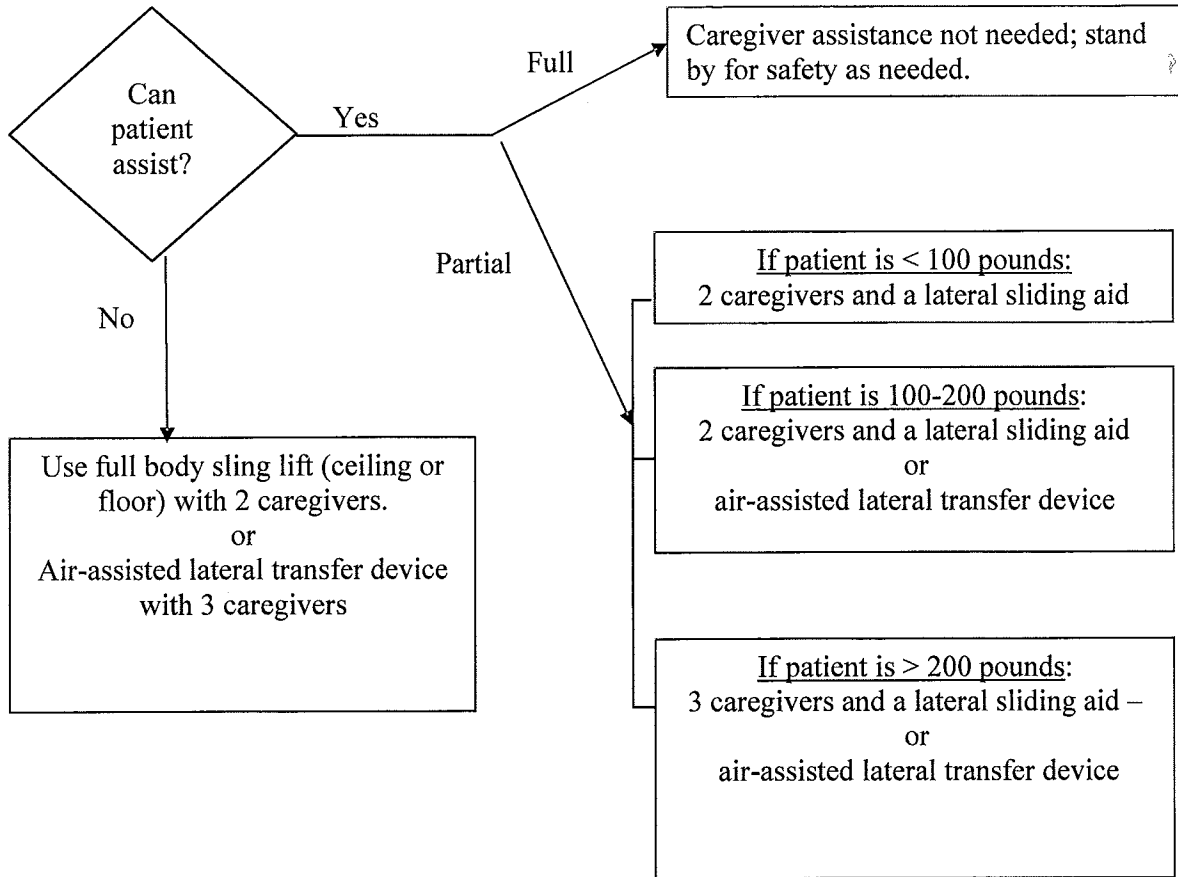
### ALGORITHM #1. TRANSFER FROM BED TO CHAIR, CHAIR TO TOILET, CHAIR TO CHAIR, OR CAR TO CHAIR



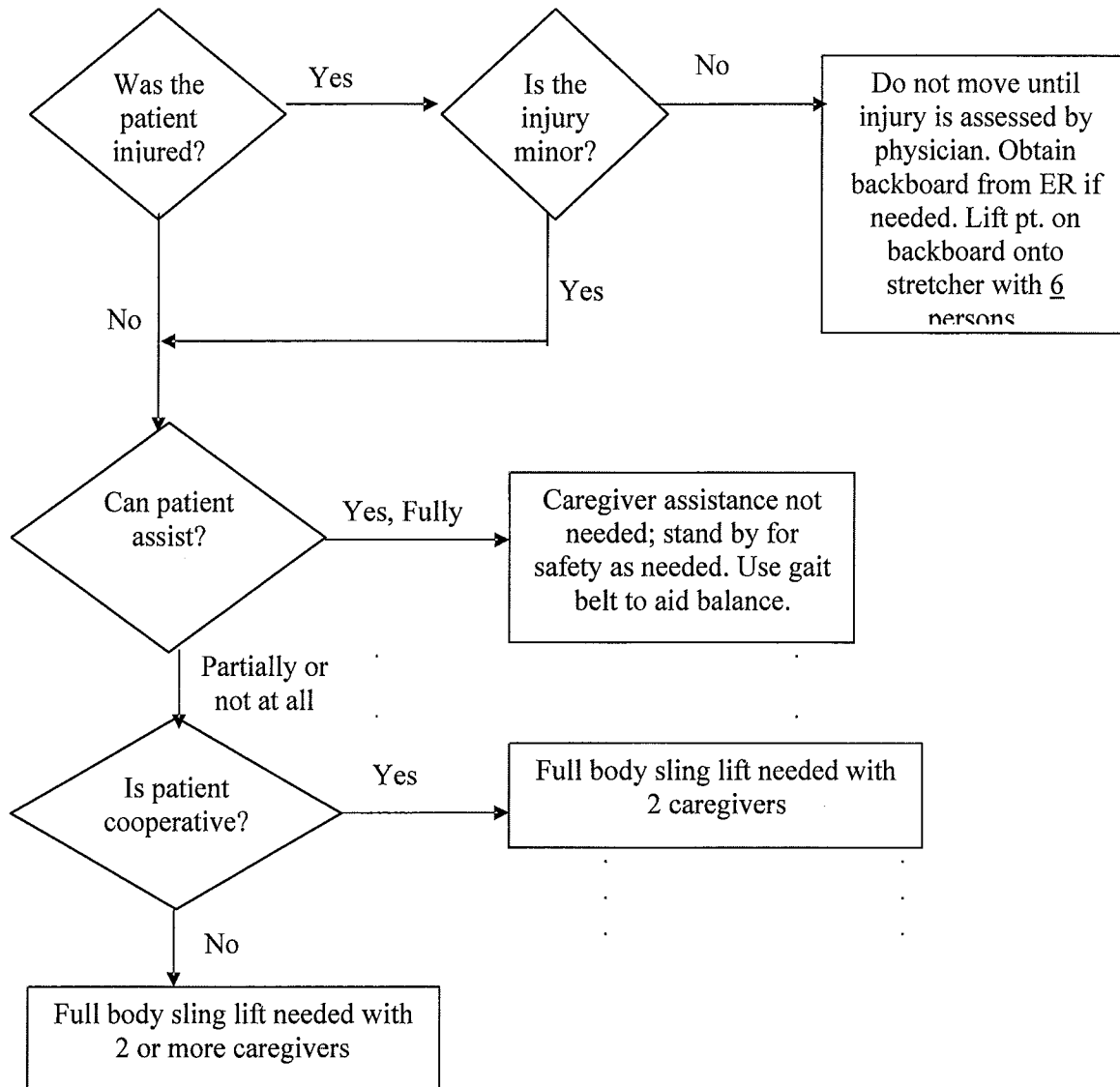
#### Comments:

- For seated transfer aid, must have chair with arms that recess or are removable.
- For full body sling lift, select a lift that was specifically designed to access a patient from the car, if the car is the starting or ending destination.

**ALGORITHM #2: LATERAL TRANSFER (BED TO STRETCHER OR BED TO BED)**



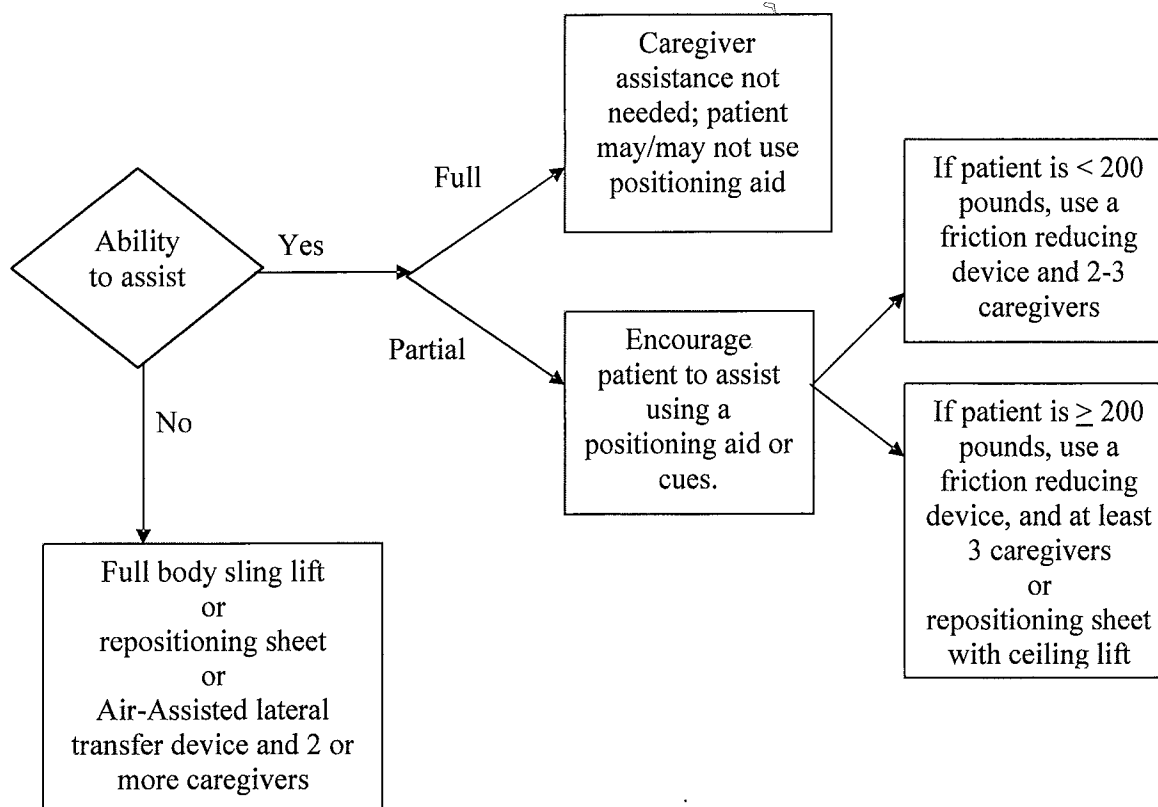
**ALGORITHM #3: PICKING A PATIENT UP FROM THE FLOOR**



**Comments:**

- Use full body sling lift that goes all the way to the floor.

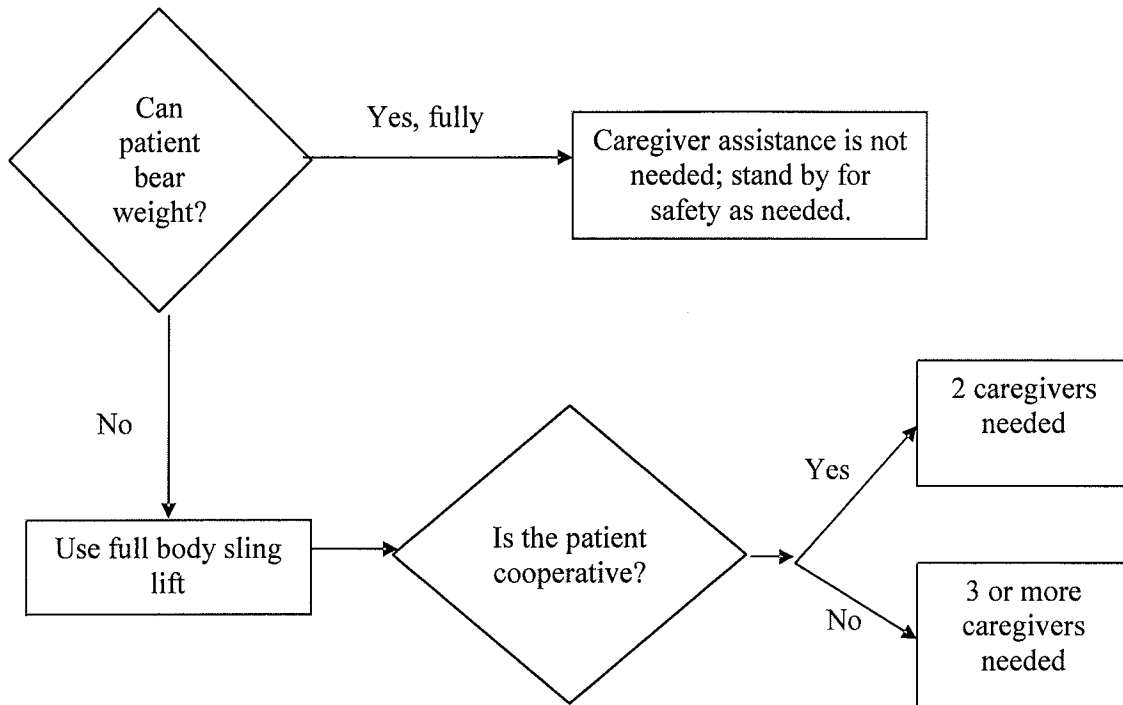
**ALGORITHM #4: REPOSITION IN BED, SIDE-TO-SIDE, UP IN BED**



**Comments:**

- This is not a one-person task - DO NOT PULL FROM HEAD OF BED. DO NOT ATTEMPT ALONE.
- When pulling a patient up in bed, the bed should be flat or in Trendelenberg position to aid in gravity, with the side rails down on the caregiver's side of the bed.
- The height of bed should be appropriate for staff safety (at the elbows or top of pelvis)
- To move up in bed, if the patient can assist, ask the patient to flex the knees and push on the count of three.
- To turn or move side-to-side, if they have use of their hands and arms, ask patient to help pull themselves over using the side rails.

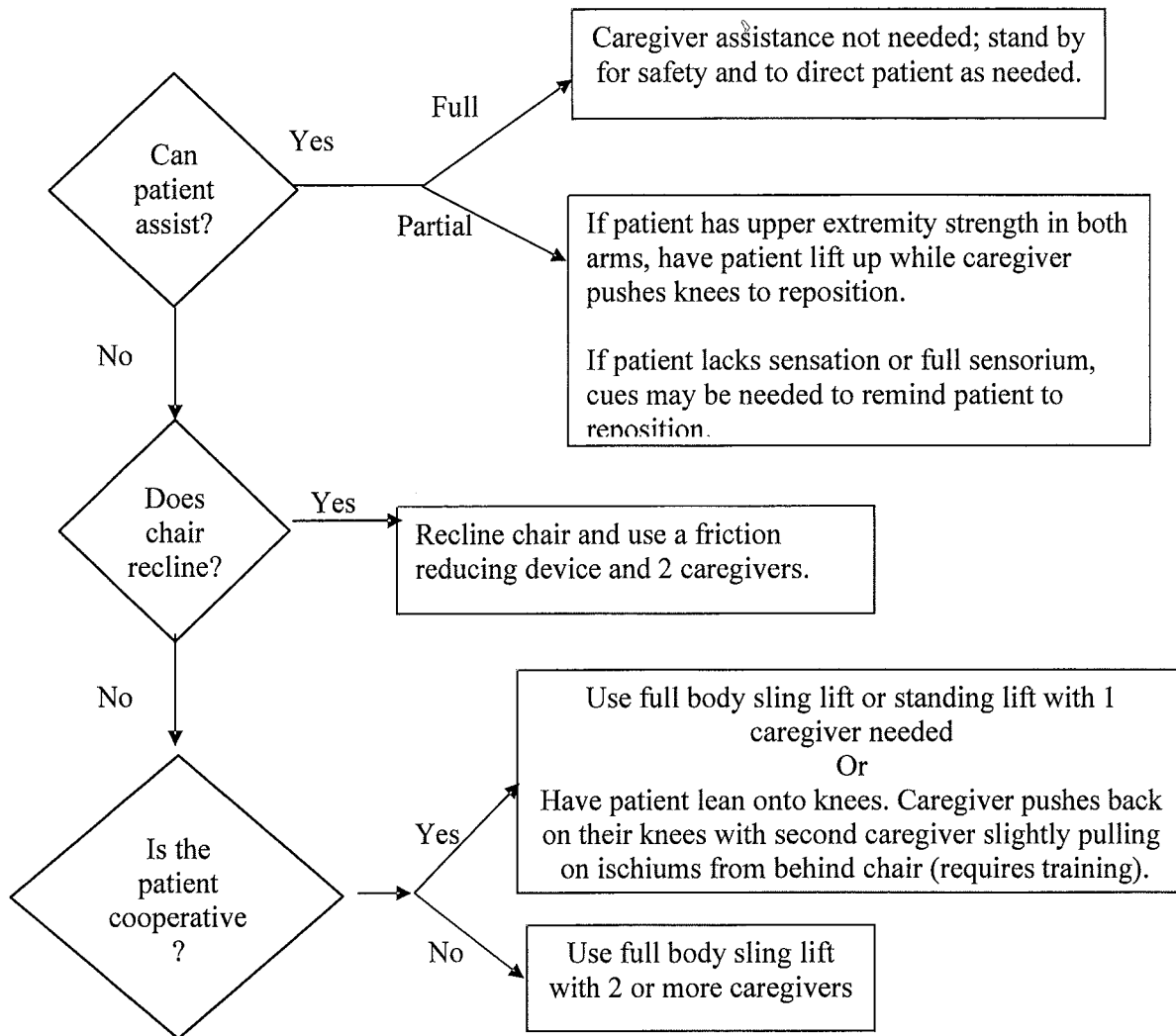
**Algorithm #5: Transfer from Chair to Stretcher or  
Chair to Exam Table**



**Comments:**

- High/low exam tables and stretchers are ideal. Always put the table or stretcher in the lowest position for this patient movement.
- Use a stool to assist those who can bear weight and cooperate.

### ALGORITHM #6: REPOSITION IN CHAIR



#### Comments:

- Take full advantage of chair functions, e.g., chair that reclines.
- Do not pull patient by arms.
- Do not pull from behind the chair.
- **Slide sheets may not remain under patient in chair.**